

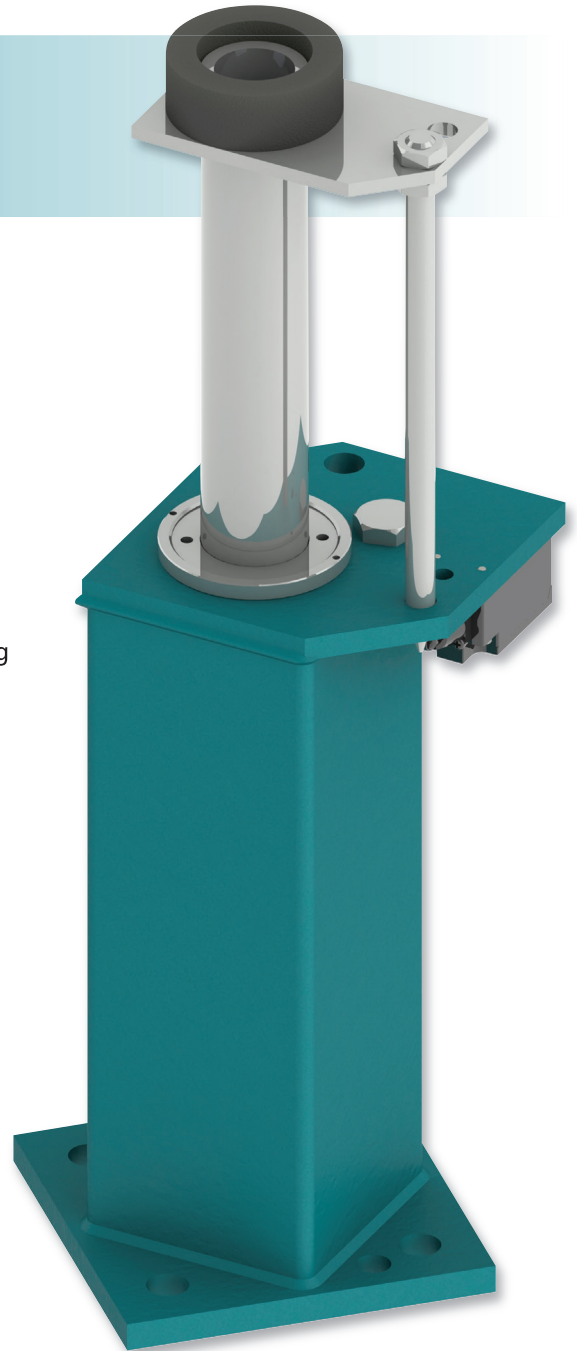
SEB buffers incorporate gas spring technology to provide a premium and robust passenger safety solution for slow to medium speed elevators.

The units are designed and manufactured according to strict engineering principles and are universally approved and globally certified.

SEB buffers can be shipped in a compressed condition which saves space and reduces transportation costs. The units can also be supplied oil filled which saves time and reduces the risk of errors during installation.

Product features

- Quick & Easy installation
- Energy dissipation buffer
- Minimum G-force experience (increased passenger protection)
- Lowest possible compressed height for specified mass range
- Smallest space envelope possible
- Reduced weight means that shipping costs are significantly lower
- Globally certified to EN81-20/50, ASME17.1, GB7588, EAC, KC
- Fully compliant with lift directive 2014/33/EU
- Wide mass range 450-4545 Kg
- Self contained, maintenance free (except statutory inspections) unit
- Gas spring return
- All supporting documentation available online



Model		SEB 16	SEB 18	SEB 20	SEB 25
Rated speed	m/s	1,600	1,800	2,032	2,540
Impact mass range	kg	450-4545	450-4545	450-4545	450-4545

Passenger

Express

Commercial

Modernisation

Freight

Vehicle

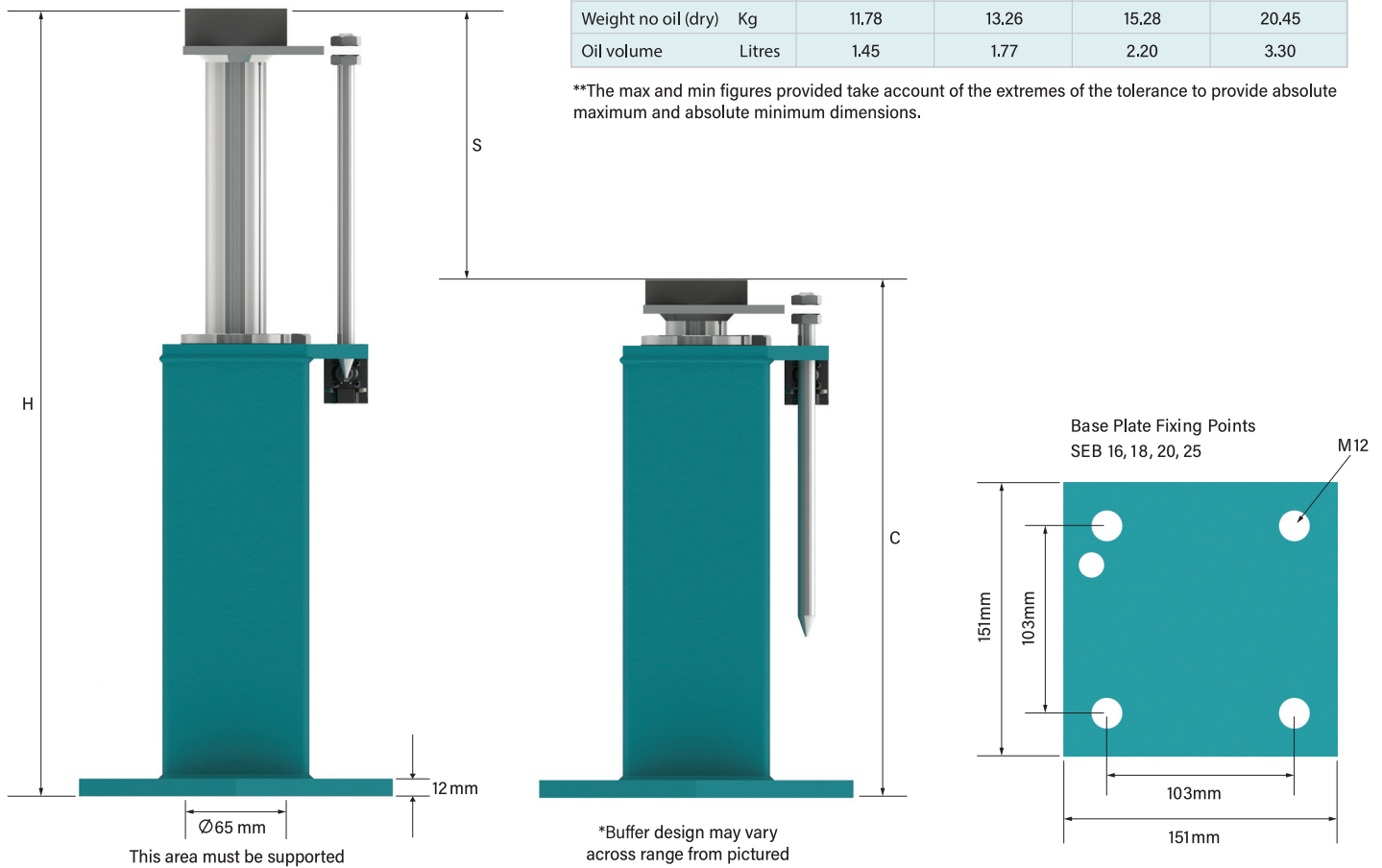
Special Applications



SEB Series

Model		SEB 16	SEB 18	SEB 20	SEB 25
Stroke 'S' (min.)	m	0.1730	0.2190	0.2790	0.4350
Height 'H' max. (extended)**	m	0.5400	0.6430	0.7770	1.1260
Height 'C' min. (compressed)**	m	0.3508	0.4078	0.4818	0.6748
Weight no oil (dry)	Kg	11.78	13.26	15.28	20.45
Oil volume	Litres	1.45	1.77	2.20	3.30

**The max and min figures provided take account of the extremes of the tolerance to provide absolute maximum and absolute minimum dimensions.



Range Overview

